

PART OF S.E. 1/4, SEC. 13, T.5N., R.3W., S.L.B. & M.

HOOPER CITY LOTS 5 TO 6, PLAT "B"

TAXING UNIT: 376

SCALE 1" = 100'

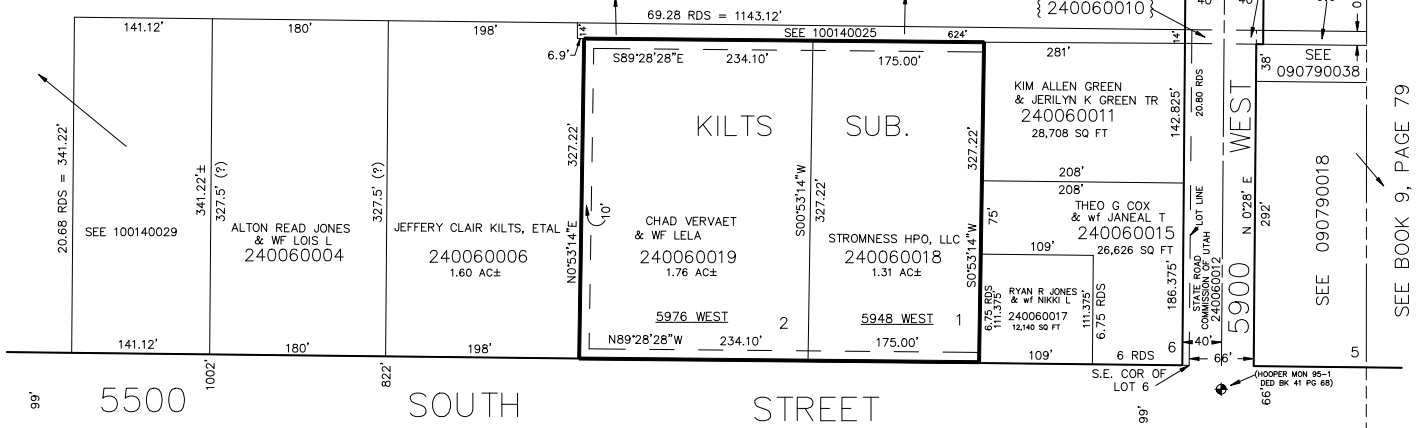
SEE BOOK 10, PAGE 14

STATE ROAD COMMISSION
{ 240060003 }

STATE ROAD COMMISSION
{ 240060010 }

DUANE W BOEHME
{ 240060002 }

1578 sq. ft.
T.5N., R.3W.
T.5N., R.2W.



SEE 090790018

SEE BOOK 9, PAGE 79

BLOCK 15, PLAT A

BLOCK 16, PLAT A

LOT 4

SEE PAGE 4